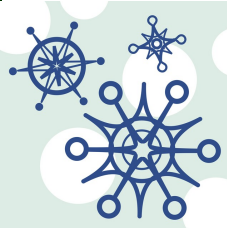


Healthy Farmer

December 2010

A publication by AgriWellness, Inc.



The Snow Edition

Every farmer knows that one of the most important topics of discussion is **WEATHER**. And that is no different when winter arrives and the snow flies. For the holiday and winter season we have compiled a number of facts and trivia about winter. Enjoy!

Question: What is the United States' snowiest city (population over 1,000)?

Answer: Valdez, Alaska

In Valdez, the average yearly snow: **297.7"**

The snowiest month: **December (67.6")**

And here's a little more trivia about Valdez:

- They've had 100" of snow in **5 different months!**
- They once had 180" of snow in just one month! That's **almost 5 times their monthly average**

Courtesy of Weather Channel Jonathan Erdman, Editorial Meteorologist

Question: What is America's worst weather airport?

Answer: Chicago O'Hare

There are a number of factors that contribute to weather issues at O'Hare airport, including:

it experiences a whole range of weather from thunderstorms to snow, it is the world's third busiest airport and many arrivals are from the east which makes it more challenging to fly around more severe weather.

Courtesy of Weather Channel Jonathan Erdman, Editorial Meteorologist

77	1200	6B	SUDE
51	1200	16	TORO
73	1200	14	WINN
60	1215	32A	BOST
73	1230	34C	NEWA
53	1300	16	TORN
86	1305	14	HALI
15	1330	32B	CHIC
91	1330	32B	CHIC
18	1330	32B	CHIC
90	1330	24A	TORO
09	1340		HAMI
10	1345	32A	LAGU
14	1345	32A	LAGU
97	1345		ATLA

Question: What is the difference between sleet, hail, and freezing rain?

Answer: *Hail is a chunk or stone of ice dropped from a thunderstorm. Sleet is frozen rain. Freezing rain is liquid rain that freezes to a surface such as the road or a tree.*

Question: On the average, one inch of rain is equivalent to how many inches of snow?

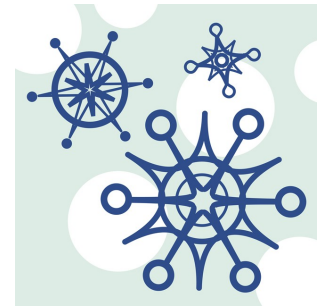
- a. 10 inches b. 1 inch c. 5 inches d. a foot

Answer: *10 inches of snow melts down to about an inch of liquid rain.*

Some weather FYI :

Fact: El Nino refers to a warming of the Pacific Equatorial waters and a slackening of the Trade Winds over those waters. But where does the name come from? It originates from Peru. Two big industries in Peru were fishing and fertilizer. Fishermen noticed that once every several years, the waters would warm; the upwelling of cold water that brought nutrients to the fish would stop; the fish that fed on the nutrients would leave; and the birds that fed on the fish would leave. The bird guano was a major source of fertilizer. It's production had a great impact on the local economy. The change in the weather was named "El Nino" after the child, Jesus Christ, giving it a religious connotation because it seemed to occur around Christmas time.

Courtesy of National Oceanic and Atmospheric Administration, eastern regional headquarters website.



*We wish you all a warm, safe and
happy holiday season.*

The staff and board of AgriWellness

AgriWellness, Inc. is a nonprofit corporation and gratefully accepts donations for its work. If you would like to make a donation to AgriWellness, please call 712-235-6100 or email us at info@agriwellness.org, or send a contribution to AgriWellness, Inc., 1210 7th St. Ste. C, Harlan, IA 51537.